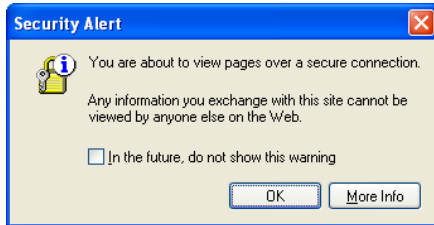
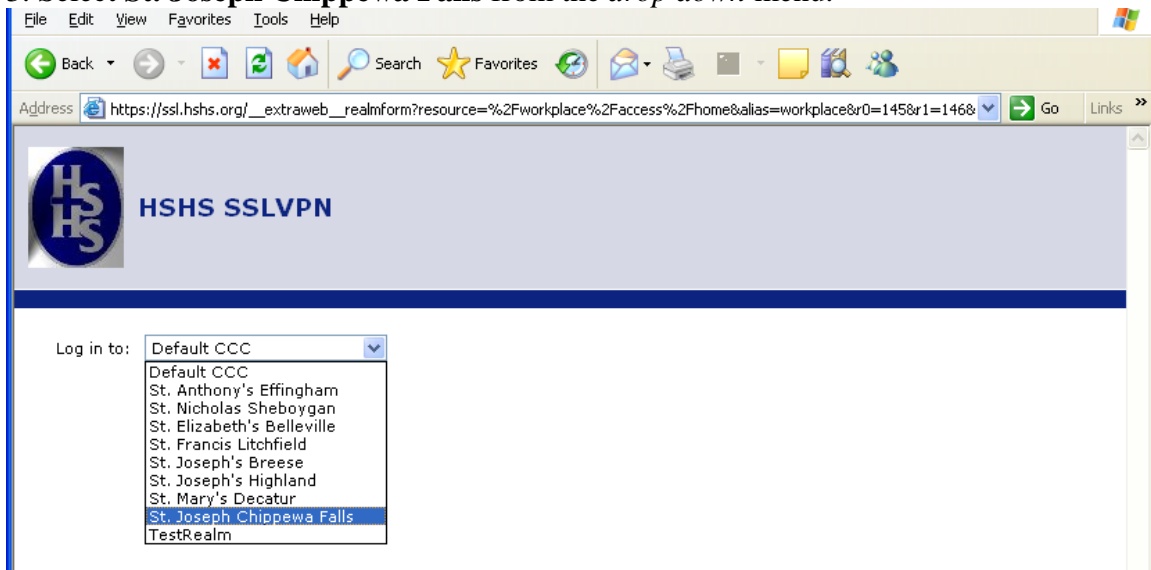


How to use SJCF Remote Access

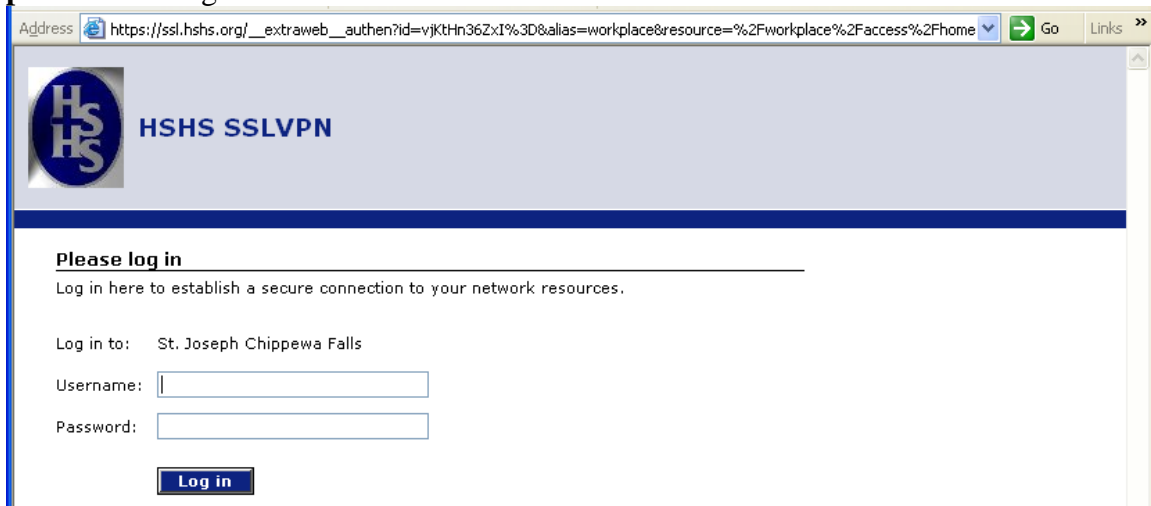
1. Go to the address <https://ssl.hshs.org>
2. Click OK to Security Alert (if prompted).



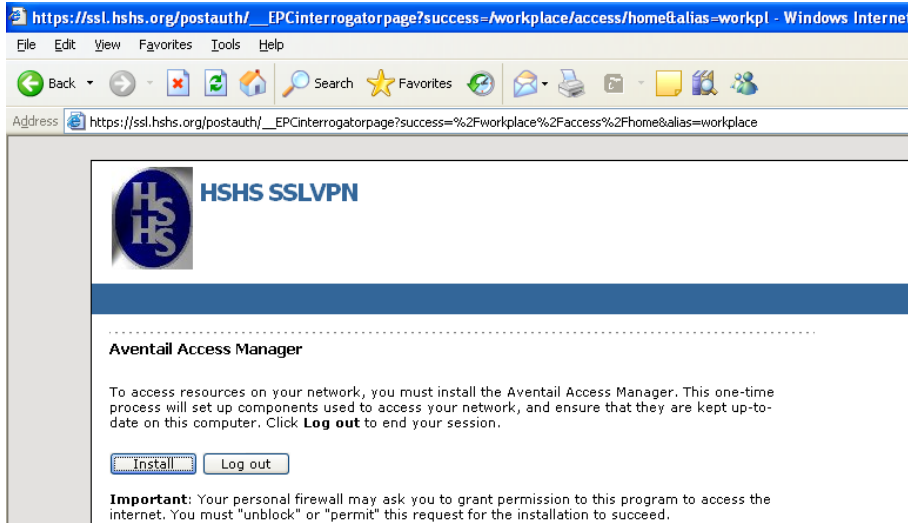
3. Select **St. Joseph Chippewa Falls** from the *drop down* menu.



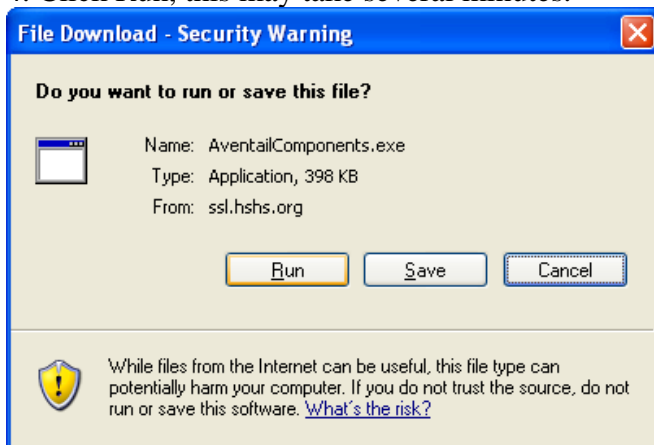
2. After selecting that Hospital, you will now be prompted for your **username** and **password** to login.



3. Click install at the following screen.



4. Click Run, this may take several minutes.



5. Click Run.



Steps 3- 5 should only be needed if you are using the ssl a computer for the first time. You may see an install again if they apply updates to the application.

6. At the following screen click desired application and login.



7. When finished Click logout at the top right corner and click close at the following screen.

